

The Calumet

1,794 Square Feet

Before you even walk in you'll know you've found the perfect place to call home. The lovely Calumet is as beautiful from the outside as it is from within. An expansive great room with an optional fireplace as well as an open kitchen—complete with a dining nook, lend to the overall roomy feeling of this layout. A cozy den offers a quiet place to retreat with a good book or a cup of coffee. And the master suite with a private bathroom and two walk-in closets is quietly tucked away at the back of the house. A secondary bedroom neighboring another full bath rounds out the living quarters of this exquisite home. There's even an option to convert the spacious den into a third bedroom. Additional home features include an attached 2-car garage, first-floor laundry, and full basement.



Architectural Style C



Architectural Style A - Included



Architectural Style B



6303 26 Mile Rd.
Suite 200
Washington, MI 48094

(888) 9-Lombardo

www.LombardoHomes.com

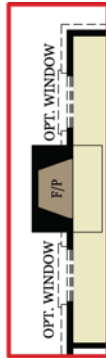


All dimensions are approximate.
Artist rendering.

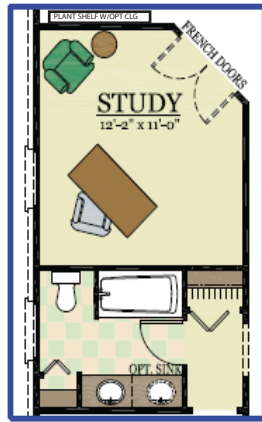
The Calumet



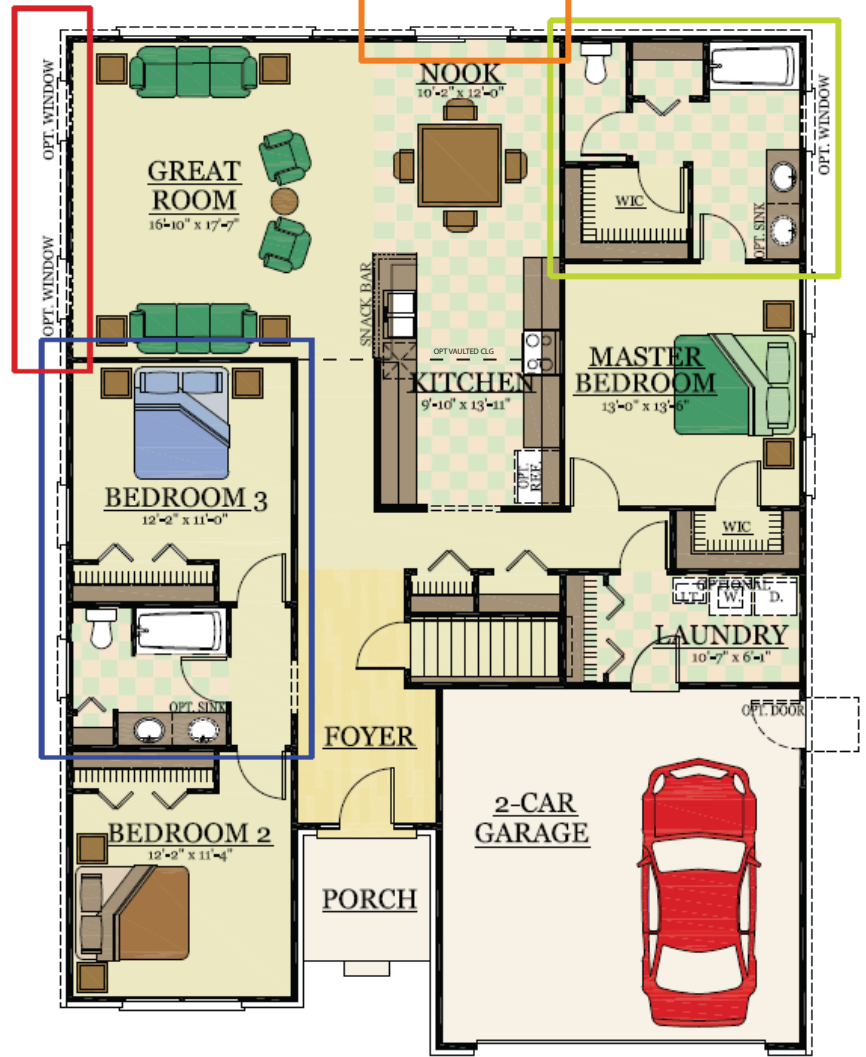
OPTIONAL
EXTENDED ANGLED BAY



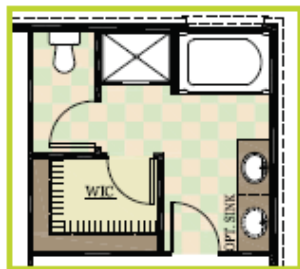
OPTIONAL
FIREPLACE



OPTIONAL STUDY



OPTIONAL 4'-0" GARAGE LENGTH EXTENSION



OPTIONAL
DELUXE MASTER BATH



OPTIONAL
LUXURY MASTER BATH

First Floor