

THE HILLS OF BOGIE LAKE
The Clairmonte

2,681 sq ft

4 Bedrooms

2.5 Baths

The Clairmonte boasts an open and sophisticated floor plan.

Three-car side entry garage included.



C



B

INCLUDED



F

When you step into the Clairmonte, you'll know you're in an extraordinary home. Flanking the foyer, the formal living and dining rooms offer plenty of entertaining space. A tucked away split staircase allows for a very open feel as you make your way to the oversized great room with a cozy fireplace that opens to the tremendously large kitchen, complete with an eating nook, large walk-in pantry and center island. A convenient powder room, combined mud and laundry room complete the first floor. Upstairs the lengthy and large master suite offers you an optional volume ceiling, large walk-in closet, lavish private bath with a soaking tub, separate shower and dual sinks. This floor is also home to three secondary bedrooms, another full bath, plus a generous loft. The Clairmonte is truly an extraordinary home.

All information contained herein was accurate at the time of publication. In order to maintain the high degree of quality and incorporate improvements with greater facility and economy we reserve the right to make changes in design, features and options and/or discontinue models without notice or obligation. Floor plan dimensions and square footage are approximate. © 2009 on floor plans and elevations.



6303 26 Mile Road, Ste. 200
Washington, MI. 48094
P (888) 9-Lombardo
SalesInfo@lombardocompanies.com
LombardoHomes.com

THE HILLS OF BOGIE LAKE
The Clairmonte

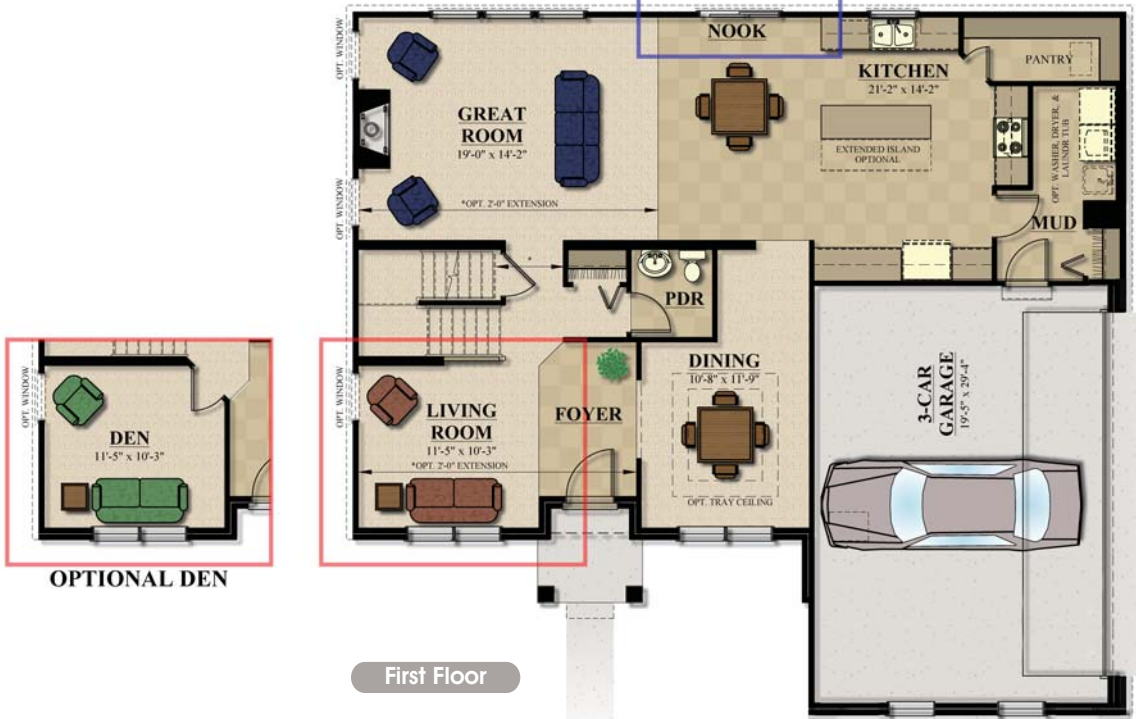
2,681 sq ft
 4 Bedrooms
 2.5 Baths



Second Floor



OPTIONAL ANGLED BAY



First Floor