

# The Hillcrest

2,333 Square Feet

The Hillcrest boasts an open floor plan complete with 2 ½ baths, an eat-in kitchen, a combined dining room and flex room, along with a spacious great room. Upstairs, the master bedroom features an incredible walk-in closet and a private bath. Three more bedrooms, a 2-car attached garage, and a basement complete this flexible home.



Architectural Style F



Architectural Style A - Included



6303 26 Mile Rd.  
Suite 200  
Washington, MI 48094

(888) 9-Lombardo

[www.LombardoHomes.com](http://www.LombardoHomes.com)



*All dimensions are approximate.  
Artist rendering.*

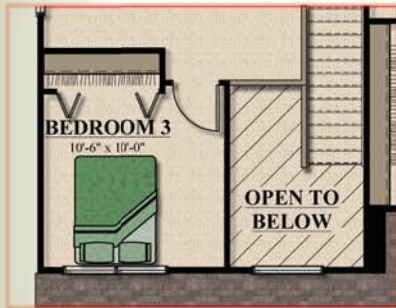


Architectural Style D

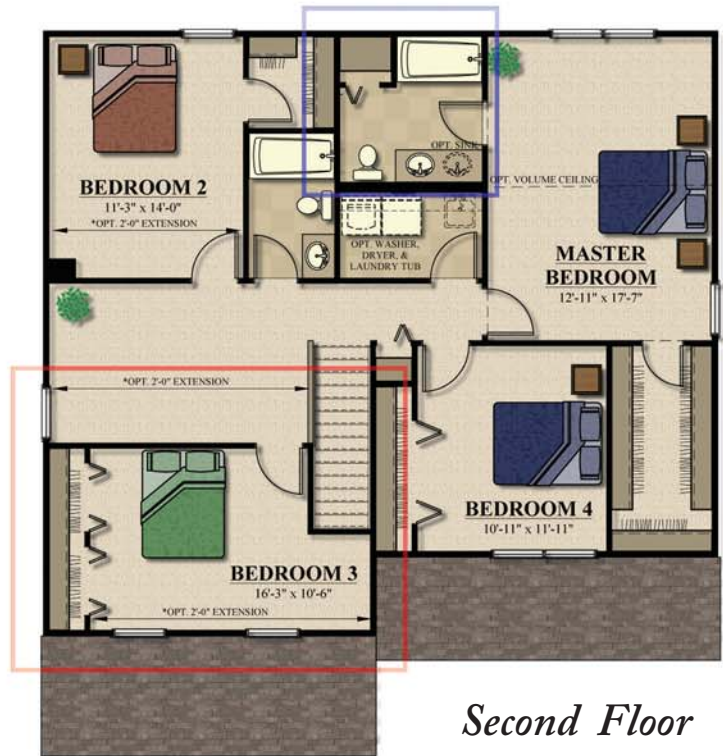
# The Hillcrest



**OPTIONAL DELUXE  
MASTER BATHROOM**



**2 STORY FOYER**  
INCLUDED ON THE 1<sup>ST</sup> ELEVATION ONLY



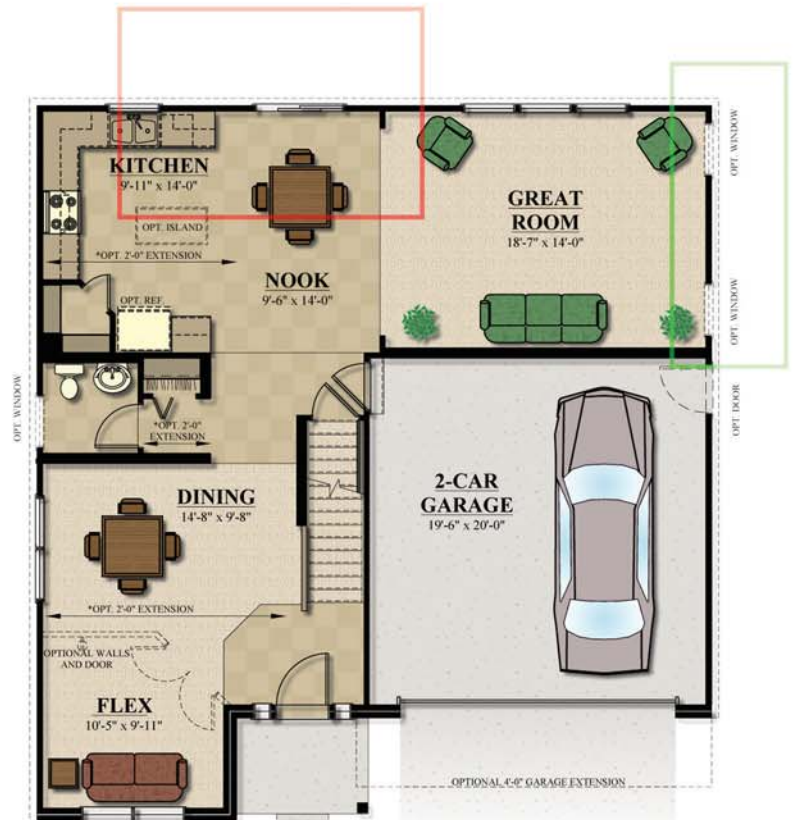
*Second Floor*



**OPTIONAL ANGLED BAY**



**OPTIONAL  
FIREPLACE**



*First Floor*

